

The AOS LED lights are solid built ultra-bright LED light panels for constant illumination. The solid design makes the LED lights ideal for onboard crash tests, mounted on tripods for general illumination or placed under tight space considerations. The heart and core of these lights are ultra-bright LEDs and state of the art control electronic. AOS LED lights are designed for constant illumination and offered with different opening angles.

AOS-LED-W12



Power Input: 24V / 15W
 LED Power: 12W continuous
 Opening Angle: 100° (fix)
 Physical Dimension: h:75 x w:64 x d:40 mm

AOS-LED-W30



Power Input: 24V / 33W
 LED Power: 30W (10 LED with 3W each)
 Opening Angle: 42° optional 26°
 Physical Dimension: h:58 x w:150 x d:38

AOS-LED-W75

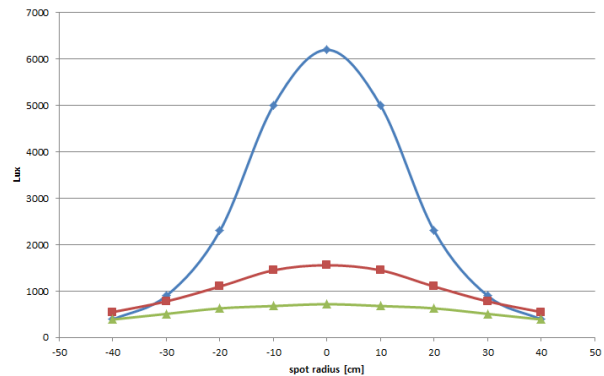
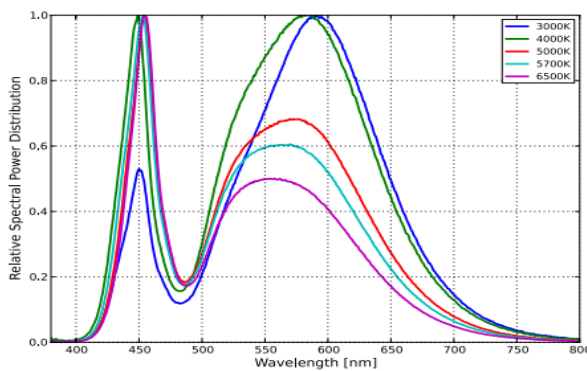


Power Input: 24V / 80W
 LED Power: 75W (25 LED with 3W each)
 Opening Angle: 42° optional 26°
 Physical Dimension: h:180 x w:135 x d:50

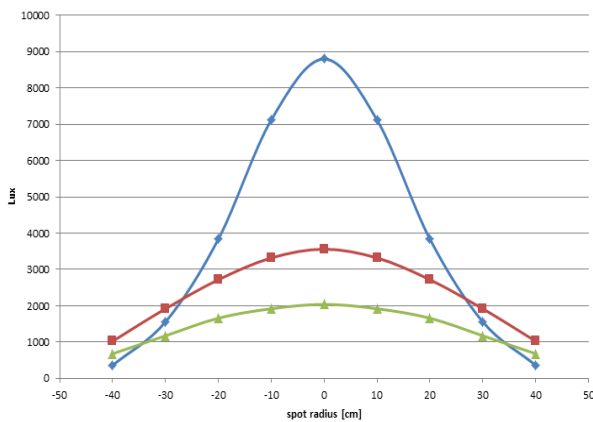
General specifications

Power Input	LEMO connector, 2 Pin / Mating connector cable side: FGG.0B.302.CLAD56
Color temperature	5700°K
Operation	Continuous operation, flicker free
Over temperature protection	Built in over temperature protection
Mounting	All models: Tripod mounting: 1 x UNC 1/4" General mounting: W12: 2 x M6 thread on bottom W30: 2 x M6 thread on backside W75: 4 x M6 thread on bottom, 4x M6 thread on backside

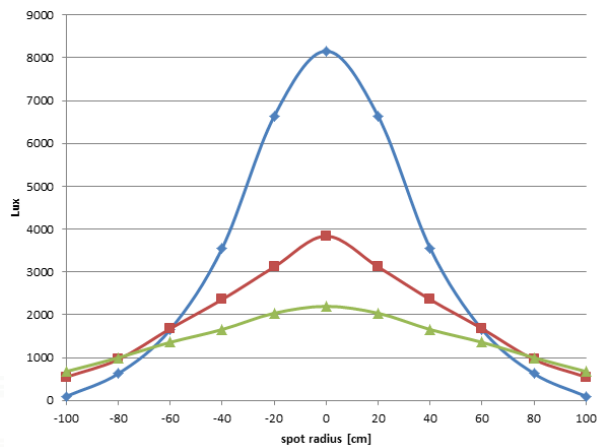
Optical specifications



LED Spectral Range (curve: 5700K)



Light Output AOS-LED W12 250mm / 500mm / 750mm distance



Light Output AOS-LED W30 250mm / 500mm / 750mm distance

Light Output AOS-LED W75 1m / 1.5m / 2m distance

Ordering information

3xxxxx	AOS-LED W12
3xxxxx	AOS-LED W30
3xxxxx	AOS-LED W75
Shipment includes	- AOS-LED Light (W12 and W30 including power supply; W75 power supply optional) - Power cable with mating connector

Your local AOS partner:

IMAGING DYNAMICS, LLC
734 207-8245
email: idbillb@msn.com
web: www.imaging-dynamics.com

